

From: "James Bond 007: Live and Let Die"

Live and Let Die

by

PAUL MCCARTNEY and LINDA MCCARTNEY

Published Under License From

Alfred Publishing Co., Inc.

© 1973 by UNITED ARTISTS MUSIC LTD. and McARTNEY MUSIC LTD.
All Rights Administered by EMI UNART CATALOG INC. (Publishing) and
WARNER BROS. PUBLICATIONS INC. (Print)
All Rights Reserved

Authorized for use by *Pablo Garcia-Quesada*

NOTICE: Purchasers of this musical file are entitled to use it for their personal enjoyment and musical fulfillment. However, any duplication, adaptation, arranging and/or transmission of this copyrighted music requires the written consent of the copyright owner(s) and of Alfred Publishing Co., Inc.. Unauthorized uses are infringements of the copyright laws of the United States and other countries and may subject the user to civil and/or criminal penalties.



LIVE AND LET DIE

Words and Music by
Paul McCartney and
Linda McCartney

Slowly

Chord diagrams: G, Bm, C, D, D(b9), G, Bm, C, D, D(b9), G, Bm, C, A, D.

mf When you were young and your heart was an o - pen book, -

you used to say live and let live. _ (You know you did, you know you did, you know you

did.) _ But if this ev - er chang - in' world in which we live in makes you

give in and cry, _ say live and let

*Recorded a half step lower.

Copyright © 1973 United Artist Music Ltd., McCartney Music Ltd., London, England
All Rights for the U.S. and Canada Administered by EMI Unart Catalog World-Wide Print Rights Controlled by CPP/Belwin, Inc., Miami, FL 33014
This arrangement © 1993 United Artist Music Ltd., McCartney Music Ltd., London, England
International Copyright Secured All Rights Reserved

A little faster

G C5/G G(b5) G5 G C5/G G(b5)

The score is in G major, 4/4 time. It consists of four measures. The first measure has a piano (f) dynamic and the lyrics "die, ____". The second measure has the lyrics "live and let". The third measure has the lyrics "die. ____". The fourth measure is a double bar line. Above the staff, guitar chords are indicated: G, C5/G, G(b5), G5, G, C5/G, and G(b5). The piano part features a steady eighth-note bass line in the left hand and a melody in the right hand. A tempo change instruction "(♩ = ♩)" is placed above the fourth measure.

Uptempo Rock

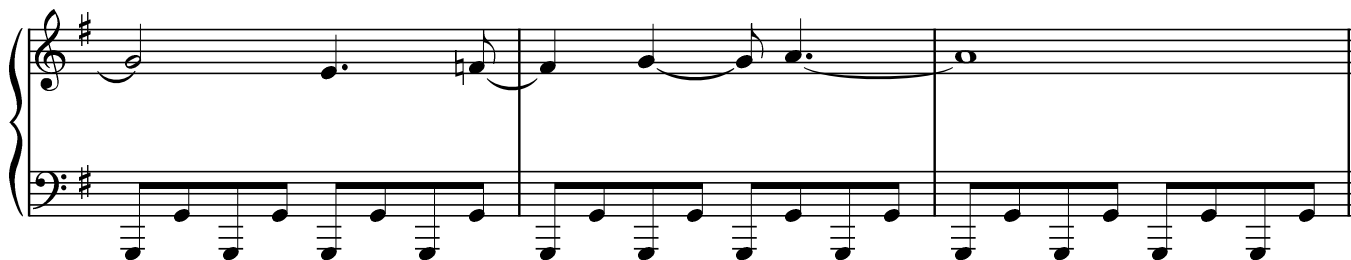
N.C.

The score is in G major, 4/4 time. It consists of three measures. The first measure has a repeat sign. The piano part features a steady eighth-note bass line in the left hand and a melody in the right hand.

N.C.

The score is in G major, 4/4 time. It consists of three measures. The first measure has a repeat sign. The piano part features a steady eighth-note bass line in the left hand and a melody in the right hand.

The score is in G major, 4/4 time. It consists of three measures. The piano part features a steady eighth-note bass line in the left hand and a melody in the right hand.



Halftime, Reggae feel



mf What does it mat - ter to __ ya? When you got a job to do __ ya got to

R.H.

*Pianists: Omit vocal melody next 5 bars.



do it well. _ You got to give the oth - er fel - la hell. _____

f


Uptempo Rock

N.C.

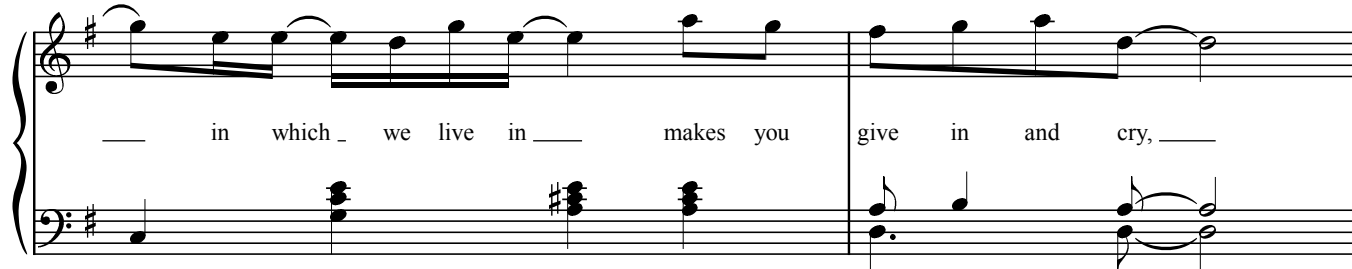
Slowly




C A D

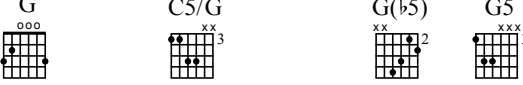


_____ in which _ we live in _____ makes you give in and cry, _____




A little faster

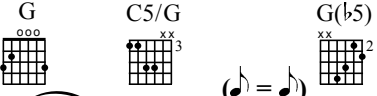
N.C. G C5/G G(b5) G5




say live and let die, _____ live and let



G C5/G G(b5) (♩ = ♩) Uptempo Rock N.C.



die. _____



1.2.3. 4. Eb5