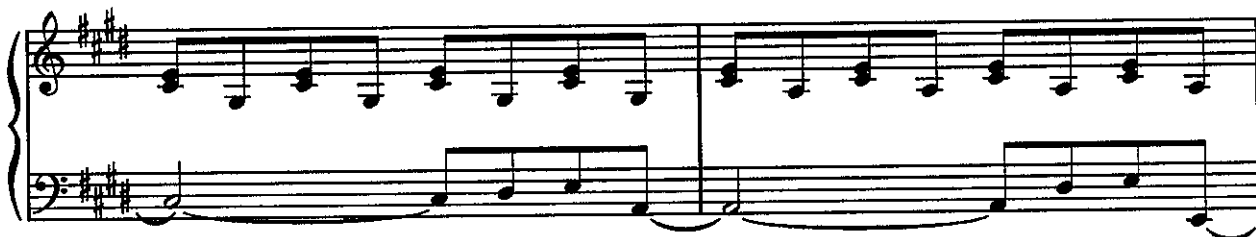


DON'T STOP BELIEVIN'

Words and Music by
STEVE PERRY, NEAL SCHON
and JONATHAN CAIN

Moderately



1. Just a small town girl, —
2. Just a cit - y boy, —
3. Voice tacet
4.5.6. (see additional lyrics)



© Copyright 1981 WEEDHIGH-NIGHTMARE MUSIC,
Hemming Morse Inc., 650 California Street, 15th Floor, San Francisco, CA 94108
All Rights Reserved

Authorized for use by *Coast Music Conservatory*

A E B

lone - ly world. _____
South De - troit. _____

She } took the mid - night train go - ing
He } _____

1.2.3.5. 4.6. A

an - y - where. _____ on and on and on and on _____

Chorus: A

Stran - gers _____ wait ing, _____
Street - light _____ peo - ple, _____

E

up and down the bou - le - vard; their
liv - ing just to find e - mo - tion;

A

13.

shad - ows, search ing in the night

hid - ing

E

2.

B E B E A To next strain

some - where in the night

4.

B E B E A To Coda ♠

some - where in the night

E B

C#m A D.S. % al Coda

Coda

E B

1. voice tacet, instr. solo
2.3. etc. Don't — stop — be - liev - in'; —

C#m A

hold on - to the feel - in', —

E B

Street - light peo - ple.

G#m A

Repeat and Fade

Verse 4:

A singer in a smokey room;
The smell of wine and cheap perfume.
For a smile they can share the night;
It goes on and on and on and on.

Verse 5:

Working hard to get my fill;
Everybody wants a thrill.
Payin' anything to roll the dice,
Just one more time.

Verse 6:

Some will win, some will lose,
Some were born to sing the blues.
Oh, the movie never ends,
It goes on and on and on and on.