

# SEPARATE WAYS

- JOURNEY

ROCK

PIANO

Musical notation for piano part, measures 1-4. Treble clef, key signature of one sharp (F#), 4/4 time signature. The melody consists of eighth notes and quarter notes. A 'SIM...' marking is at the end of the line.

Musical notation for piano part, measures 5-8. Treble clef, key signature of one sharp (F#), 4/4 time signature. The melody consists of eighth notes and quarter notes. A 'SIM...' marking is at the end of the line. 'END SYNTH LINE.' is written above the staff.

E MIN                      D/E                      C/E

Musical notation for piano part, measures 9-12. Treble clef, key signature of one sharp (F#), 4/4 time signature. Chords are indicated by vertical lines and dots. A '9' is written below the first measure.

E MIN                      D/E                      C/E

Musical notation for piano part, measures 13-16. Treble clef, key signature of one sharp (F#), 4/4 time signature. Chords are indicated by vertical lines and dots. A '13' is written below the first measure.

**A** E MIN                      D/E                      C/E

Musical notation for piano part, measures 17-20. Treble clef, key signature of one sharp (F#), 4/4 time signature. The staff contains rhythmic slashes. A '17' is written below the first measure.

- 1. HERE WE STAND...
- 2. TROUBLED TIMES...

E MIN                      D/E                      C/E

Musical notation for piano part, measures 21-24. Treble clef, key signature of one sharp (F#), 4/4 time signature. The staff contains rhythmic slashes. A '21' is written below the first measure.

Property of Coast Music Conservatory

This music is for rehearsal and educational purposes only and is not authorized for any other use.

E MIN

D/E

C/E



25

SLEEPLESS NIGHTS...

DISTANT EYES...

E MIN

D/E

C/E

A MIN7 B MIN7



29

**B** C MA7

D

A MIN7

A MIN7 B MIN7



33

FEELIN' THAT IT'S GONE...

IF YOU MUST GO...

C MA7

D

A MIN7

B MIN7

C MA7



37



**C** E MIN

E MIN/D



42

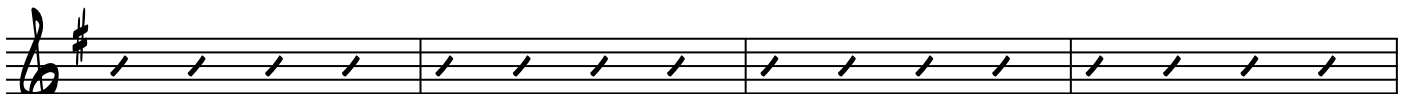
SOMEDAY LOVE WILL FIND YOU...

E MIN/C

A MIN

D

B/D#



46

E MIN E MIN/D

50 IF HE EVER HURTS YOU...

E MIN/C A MIN D B/D# TO CODA

54

GUITAR SOLO E MIN E MIN/D

58

E MIN/C A MIN D B/D#

62

E MIN E MIN/D

66 I STILL LOVE YOU GIRL...

A MIN D B/D# END SOLO

70

BREAKDOWN  
E MIN

74

78

SIM...

82

86

(D.S. AL CODA)

OHMM...



E MIN

E MIN/D

90

I STILL LOVE YOU GIRL...

A MIN

A MIN

B/D#

94

SIM...

E MIN

E MIN/O



98

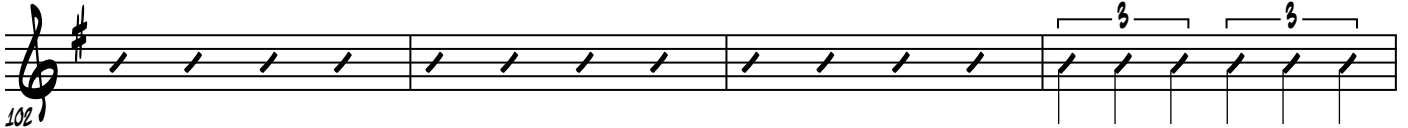
AND IF HE EVER HURTS YOU...

E MIN/C

A MIN

O

B/O#



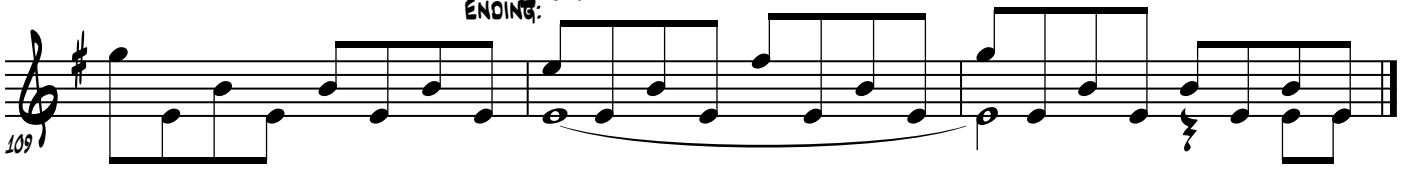
102

ENDING: E MIN



106

ENDING: E MIN



109